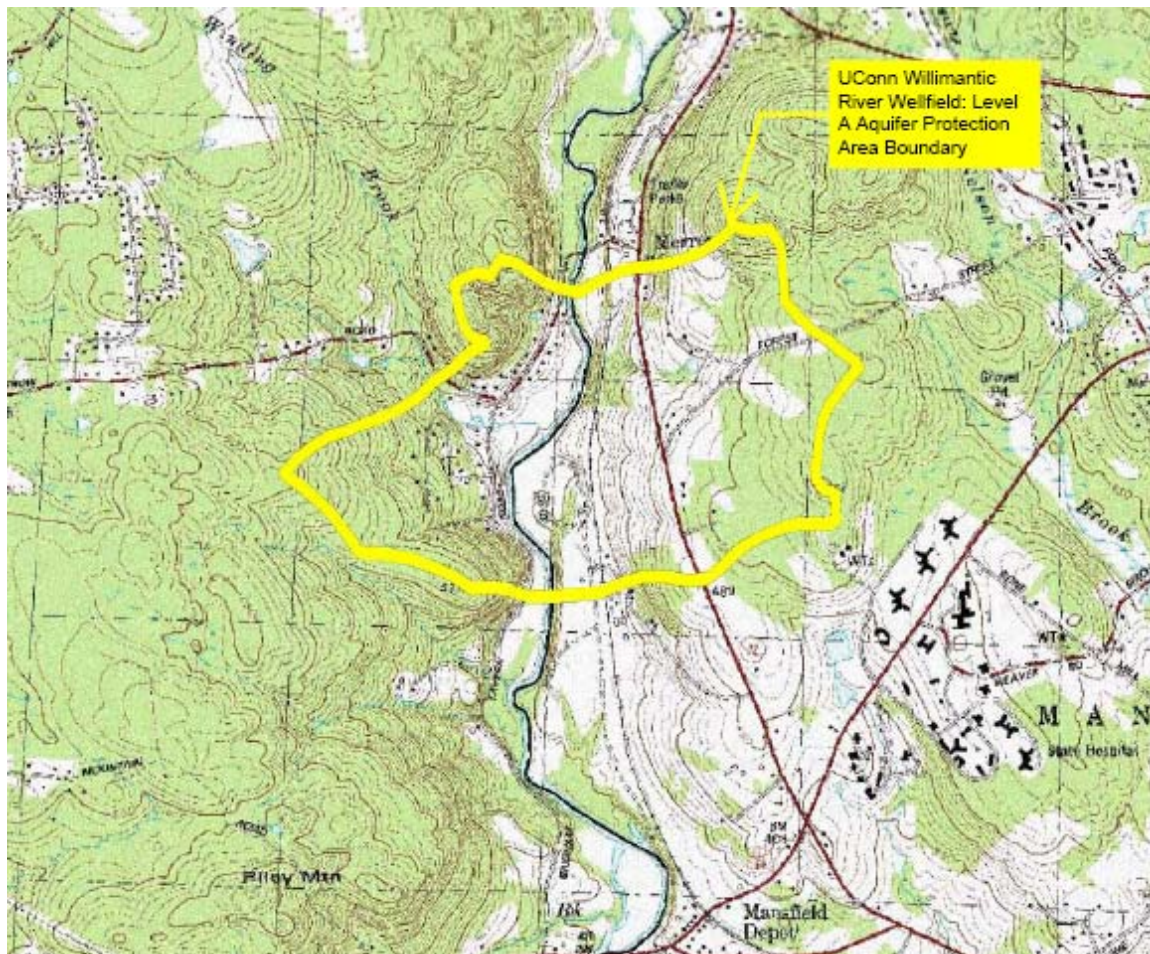


Level A Aquifer Mapping for UConn's Willimantic Wellfield Approved by DEP

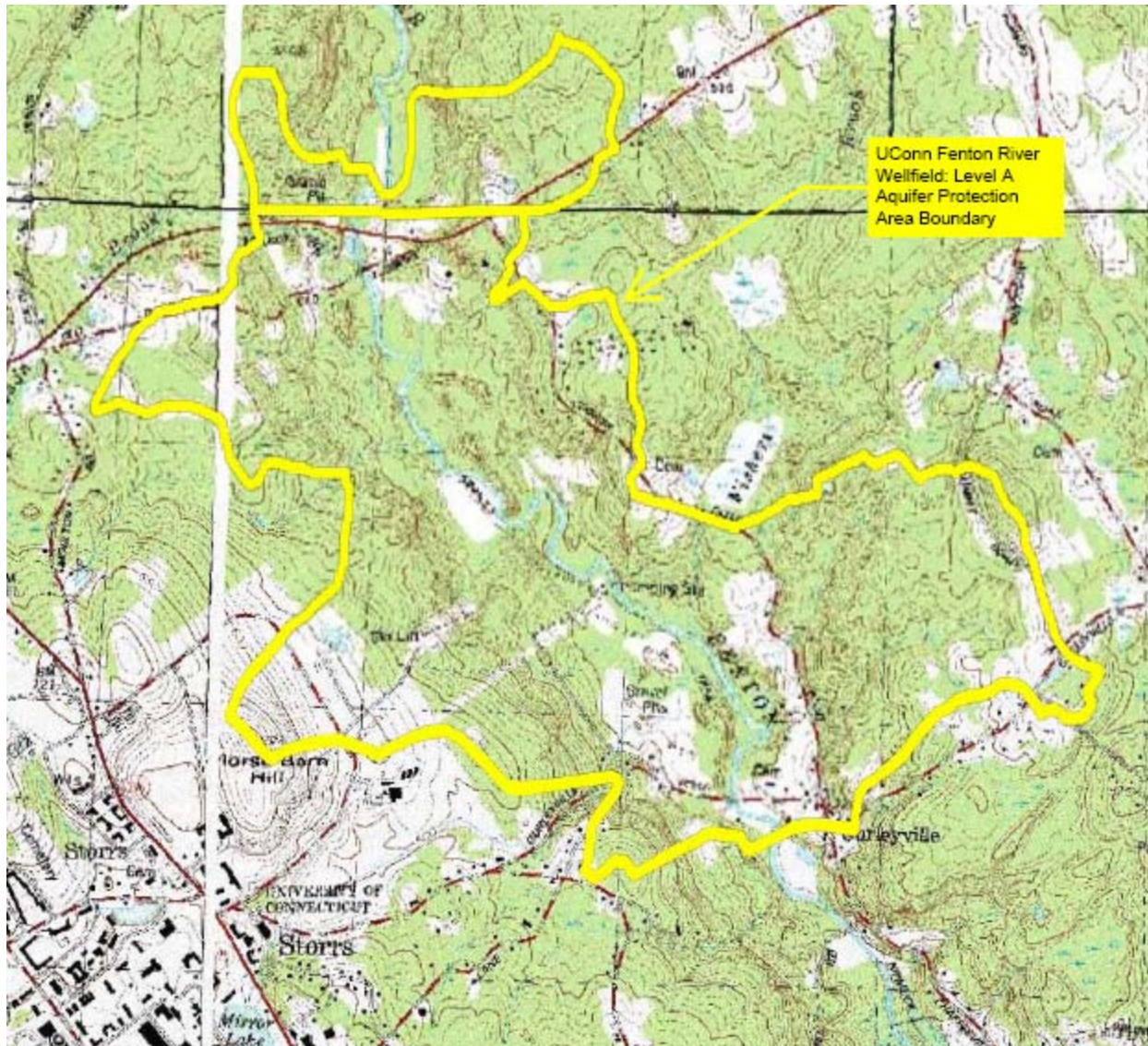
As a supplier of potable water, UConn prepared its "Level A" mapping which outlines the extent of the aquifer protection area contributing to its water supply wells along the Willimantic River.

Level A Mapping Regulations (R.C.S.A. 22a-354b-1) specify the procedures to be used in the mapping process, including criteria for extensive site-specific data collection, development of a numerical ground water model of the aquifer system, and the modeling simulations required to define the aquifer protection area. The maps must be prepared in accordance with the regulations and submitted to DEP for approval.

In June 2007, DEP approved UConn's mapping for the Willimantic River Aquifer Wellfield. This mapping becomes the final regulatory boundary. DEP has approved a total of 40 maps for the 126 state-wide well fields in the DEP program.



UConn has completed its entire aquifer mapping in advance of the statutory deadline of June 1, 2008. UConn mapping for the wellfield along the Fenton River was previously completed and approved.



UConn looks forward to working with the local municipalities as they develop their aquifer protection area regulations and register the regulated activities that fall within the protection areas.

For further information on UConn's aquifer mapping, please contact Jason Coite at (860) 486-9305 or jason.coite@uconn.edu.

Related Links:

[DEP Aquifer Protection Area Program Fact Sheet](#)
[DEP Aquifer Protection Area main web page](#)